

Spokane Bar Sapphire Mine & Gold Fever Rock

End of March - Spokane Bar Sapphire Mine 2004 Newsletter

Dear Friends!

Expectations are like spring – waiting, waiting, waiting for that sunny day – when all along the buds are forming and the bulbs are pushing their way into activity. It is like that here at the sapphire mine – waiting – while the gray clouds drift across the sky shading the ground below and (coloring) the thoughts with non activity – seemingly – like waiting for the sparks of insight and dynamic activity below the surface to rise on a quickening wind or whim.

The ice melts slowly off the sluice box on the north side of the mining equipment. The frost is still deep, slow to come out of the pit. The ceaseless wind shakes the pine and scurries the would-be outdoors adventurer back inside. No, not me – I can get a suntan even on a brisk day (47 degrees)! Here we are – filling boxes with sapphire gravel for the loyal and patient rock hounds. Gem pick up tools are selling wildly so those hooked on rocks can fulfill their treasure seeking instincts. Find these “Mining Tools” on our website: www.sapphiremine.com.

The Discovery Channel’s phone number to check on a re-run of *Hunt for Amazing Treasures* “Fortunes Abound” aired last May 1st on the sapphire mine is: **1-859-342-8439** in Kentucky. It looks a bit doubtful – at least through June. For those that missed the show we are still considering a “how to” video for sapphire gravel processing. There are so many unique minerals and treasures that are found in the gravel - everyone is interested.

I am starting a list of interested prospectors for “**Course Gold of Montana**” a book to be completed soon. I will print the first edition this summer. It is almost finished being typed. There are tips on mining with metal detectors and gold pans with a list of specific creeks to search in Montana. An excerpt:

“The formation of alluvial or stream placer deposits by natural means involves processes similar to those used by the mining industry in the mining, crushing and

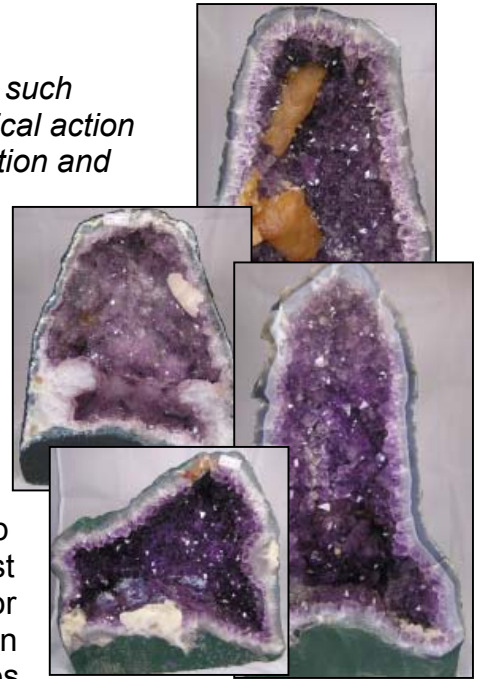


gravity concentration of ore minerals. In the natural process, alluvial placers are formed as a result of the disintegration of weathering of mineralized veins and rocks, and the subsequent mechanical concentration of heavier minerals in economic mineral deposits by the action of running water and gravity separation.

Placer minerals are released from the lode or matrix rocks by such natural agents as the wind, frost, rain, flowing streams, chemical action (as being turned to solution), changes in temperature, vegetation and movement in the earth crust. Working slowly throughout geological time, these agents gradually reduce rock to gravel, sand, silt and clay – releasing the precious metals and other heavy minerals contained in the rocks.”

Watch for **“Course Gold of Montana”** on our website soon!

We have added products to our website at <http://www.sapphiremine.com/rockshop.htm>. The amethyst geodes are featured and others are available here at the mine shop – Gold Fever Rock Shop. Monster Mines are still in stock – most from the early Pea Gravel Pit. Dan sent in a bag of sapphires for Deb to grade with several matching pink sapphires that were found in the Spokane Bar Monster Mine material. Order more Monster Mines at <http://www.sapphiremine.com/products.htm>.



Here are some comments to help encourage those ready to give up the search through their sapphire gravel – as in *“throwing it in the fish tank”* per Kathleen.

Carl writes:

“Hi Deb, I updated my web site: <http://www.huntforgems.com/sapphiremt.html> I have to say WOW I just finished going through the El Dorado Sapphire gravel bag #2 the second time, this time with the light box and wow I found 130 more Sapphires. For a total of 153 Sapphires from that bag. I had a great time doing this and seeing what I missed with out the light box. So people - always go through your dirt more then once.”

Go ahead and check out Carl’s great website! Once again – thank you for your interest in sapphire and gold mining! Brian or Deb will take your calls at 1-877-dig gems or order online at <http://www.sapphiremine.com> . Thanks for your terrific response and continued interest in mining sapphire gravel at home. Recent photos will be posted on our website under “Newsletters”.

Sincerely,

Deb and Russ Thompson and staff at the Spokane Bar Sapphire Mine
1-877-dig gems, 1-406-227-8989 www.sapphiremine.com
email us at sales@sapphiremine.com
5360 Castles Road – Helena, Montana 59602